

止回阀

Check Valve



止回阀 Check Valve

应用：

该类型止回阀用于不锈钢管路，以防止液体回流。

Application:

This type of check valves are used to stainless steel pipe system to prevent the fluid reflux.

工作原理：

止回阀依靠介质本身流动而自动打开或关闭。当阀杆下部的压力超过阀杆上面的压力以及弹簧力时，止回阀阀瓣就会开启；当阀杆上下压力平衡时，止回阀就会关闭。

Operation Principle:

Check valve rely on the medium flow to open or close. The check valve disc will open when the pressure of stem bottom exceed the stem above and the spring. The check valve disc will close when the two pressure are equalled.



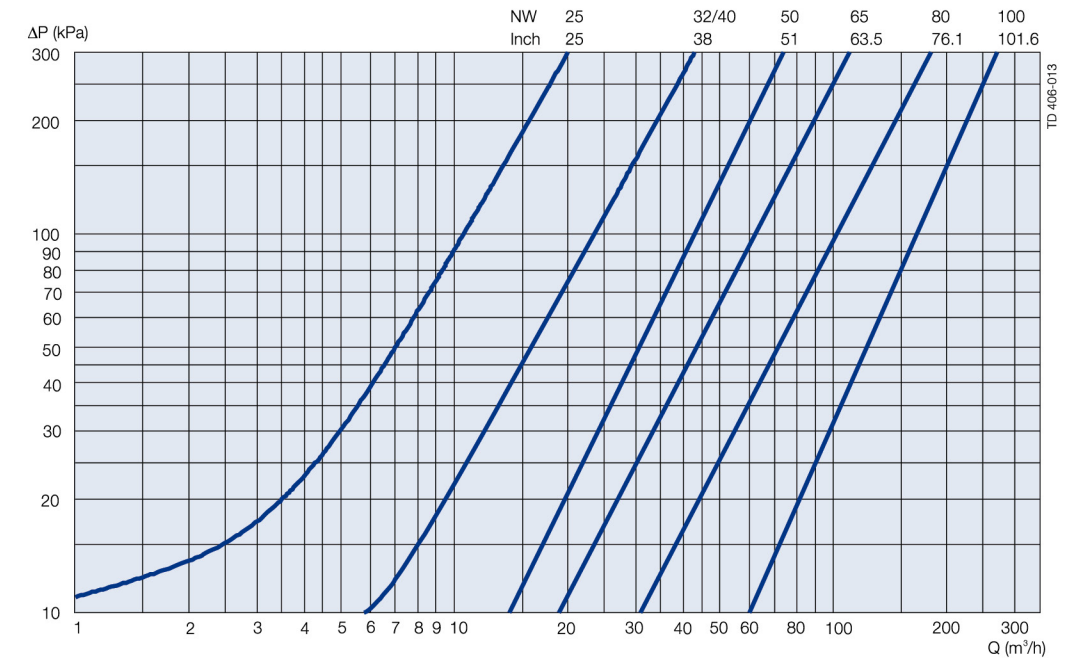
技术参数 Technical Details							
金属材料 Material	阀体, 阀芯 Valve body, disc	304L / 316L (1.4301 / 1.4404) 锻造 304L / 316L (1.4301 / 1.4404) Forging	可提供材质检测报告单 Material inspection report is available				
密封材质 Sealing material	三元乙丙 (EPDM) / 硅橡胶 (Silicone) / 氟橡胶 (FPM)		采用进口密封材料, 所有密封材料均符合 FDA 117.2600/FDA 117.1210 Adopt imported sealing materials, all the seal material conform to The FDA 117.2600/FDA 117.1210				
压力 Pressure	工作压力 Working pressure	0~10bar					
	开启压力 Opening pressure	0.1bar					
温度 Temperature	工作温度 Working temperature	EPDM :(-25°C ~ +150°C) Silicone:(-50°C ~ +200°C) FPM:(-5°C ~ +250°C)					
	灭菌温度 Sterilization temperature	150°C (MAX 20min)					
表面处理 Surface treatment	内表面处理 Inside surface treatment	Ra ≤ 0.4-0.8μm					
	外表面处理 Surface treatment	Ra ≤ 0.8-1.6μm					
连接方式 Connection	焊接口标准 Weld standard	DIN 11850 / SMS / 3A / ISO					
	连接方式: 焊接、卡箍、螺纹 Connection: welding, clamp, thread						
流量 Rate of flow	DN25/1"	DN32	DN40/1.5"	DN50/2"	DN65	DN80	DN100
	17.3m³/h	24m³/h	34.7m³/h	50m³/h	106m³/h	149m³/h	230m³/h

止回阀 Check Valve



处理能力/压力降对比图

Pressure Drop/Capacity Diagram



注意！

这些曲线图示数据的测定系基于：

介质：水（水温 20°C）

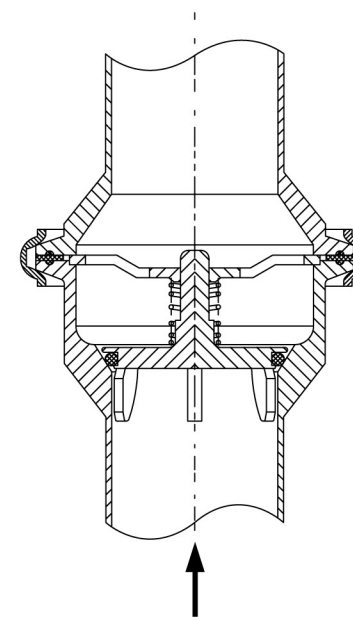
测量：符合 VDI 2173.

Note!

The profile date base on:

Medium: Water (20° C).

Measurement: In accordance with VDI 2173.



图为最佳的安装方式

其他可允许的阀门位置为：水平式

阀芯上的四根导向柱可确保阀门良好的校准性

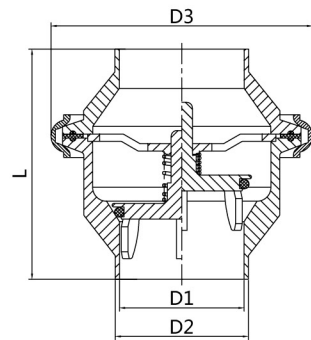
The picture shows the best installation

Other allowable valve position is: horizontal

The four guide posts on the valve core ensure good calibration of the valve

止回阀 Check Valve

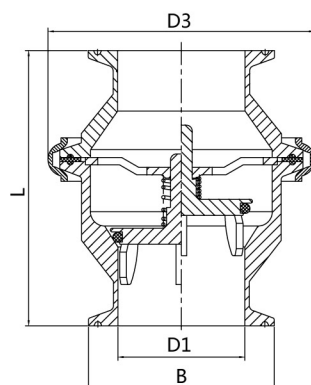
DIN



焊接式止回阀
Check Valve Weld End

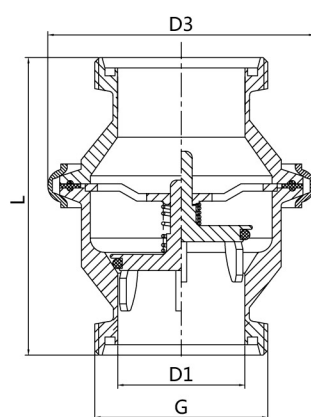
SIZE	D1	D2	D3	L
DN25	26	29	69	80
DN32	32	35	85	80
DN40	38	41	85	80
DN50	50	53	99	90
DN65	66	70	115	100
DN80	81	85	136	115
DN100	100	104	160	155

卡箍式止回阀
Check Valve Clamp End



SIZE	D1	B	D3	L
DN25	26	50.5	69	106
DN32	32	50.5	85	106
DN40	38	50.5	85	106
DN50	50	64	99	116
DN65	66	91	115	126
DN80	81	106	136	141
DN100	100	119	160	181

DIN 螺纹式止回阀
DIN Check Valve Thread End

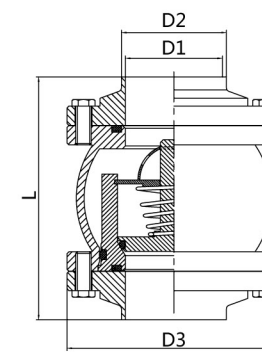


SIZE	D1	G	D3	L
DN25	26	RD52×1/6"	69	124
DN32	32	RD58×1/6"	85	124
DN40	38	RD65×1/6"	85	124
DN50	50	RD78×1/6"	99	136
DN65	66	RD95×1/6"	115	150
DN80	81	RD110×1/4"	136	165
DN100	100	RD130×1/4"	160	215

本 DIN 尺寸数据仅为 DIN 其中一个系列。请参考图册尾页了解更多 DIN 系列数据。
This DIN dimension is only one of DIN series. Please check more DIN series information on the final pages of this book.

止回阀 Check Valve

DIN



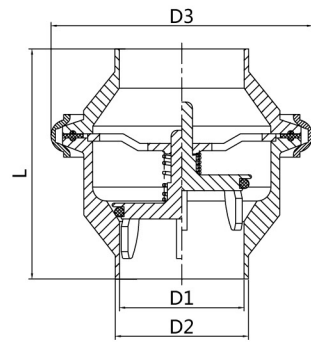
球形止回阀
Ball-Type Check Valve

SIZE	D1	D2	D3	L
DN25	26	29	85	115
DN32	32	35	85	115
DN40	38	41	100	115
DN50	50	53	110	125
DN65	66	70	130	135
DN80	81	85	146	145
DN100	100	104	167	165

本 DIN 尺寸数据仅为 DIN 其中一个系列。请参考图册尾页了解更多 DIN 系列数据。
This DIN dimension is only one of DIN series. Please check more DIN series information on the final pages of this book.

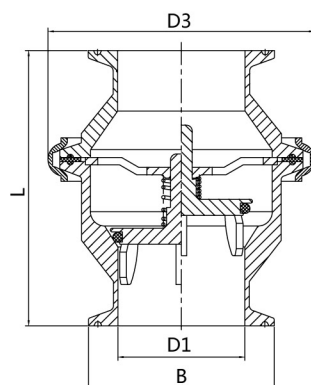
止回阀 Check Valve

INCH



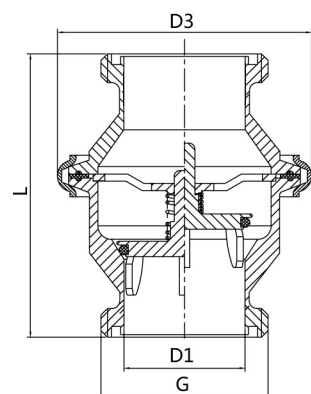
焊接式止回阀
Check Valve Weld End

SIZE	D1	D2	D3	L
1"	22.1	25.4	69	80
1.5"	34.8	38.1	85	80
2"	47.5	51	99	90
2.5"	60.2	63.5	115	100
3"	72.9	76.1	136	115
4"	97.4	101.6	160	155



卡箍式止回阀
Check Valve Clamp End

SIZE	D1	B	D3	L
1"	22.1	50.5	69	106
1.5"	34.8	50.5	85	106
2"	47.5	64	99	116
2.5"	60.2	77.5	115	126
3"	72.9	91	136	141
4"	97.4	119	160	181



螺纹式止回阀
Check Valve Thread End

SIZE	D1	G	D3	L
1"	22.1	Rd40×1/6"	69	118
1.5"	34.8	Rd60×1/6"	85	126
2"	47.5	Rd70×1/6"	99	136
2.5"	60.2	Rd85×1/6"	115	154
3"	72.9	Rd98×1/6"	136	169
4"	97.4	Rd132×1/6"	160	219

球阀 Ball Valve

